

CAL FIRE NEWS RELEASE

California Department of Forestry and Fire Protection



CONTACT: Incident Information Line:
530-303-2455
Media Line
530-497-0315

RELEASE DATE: August 29, 2021
3:30 p.m.

WHAT: Update to Evacuation Orders, Warnings, and Road Closures

WHEN: **Effective Immediately**

WHERE: **Amador County**

Road Closures:

- Highway 88 is closed between Omo Ranch Rd. and the Highway 88/89 interchange.

Evacuation Order:

Amador County

- South of Highway 88 along the Amador/El Dorado County line from Dufrene Road, due east to the Amador/Alpine County line and from the Amador/Alpine County line north to Hwy 88.

Shelter Info

- Our Red Cross TEP will be at the Italian Picnic Grounds in Sutter Creek. 581 Hwy 49.

NOTES:

All previous evacuation orders and warnings remain in effect

A mandatory **evacuation order** is defined as an immediate threat to life. This is a lawful order to leave now. The area is lawfully closed to public access.

An **evacuation warning** is defined as a potential threat to life and/or property. Those who require additional time to evacuate, and those with pets and livestock should leave now.

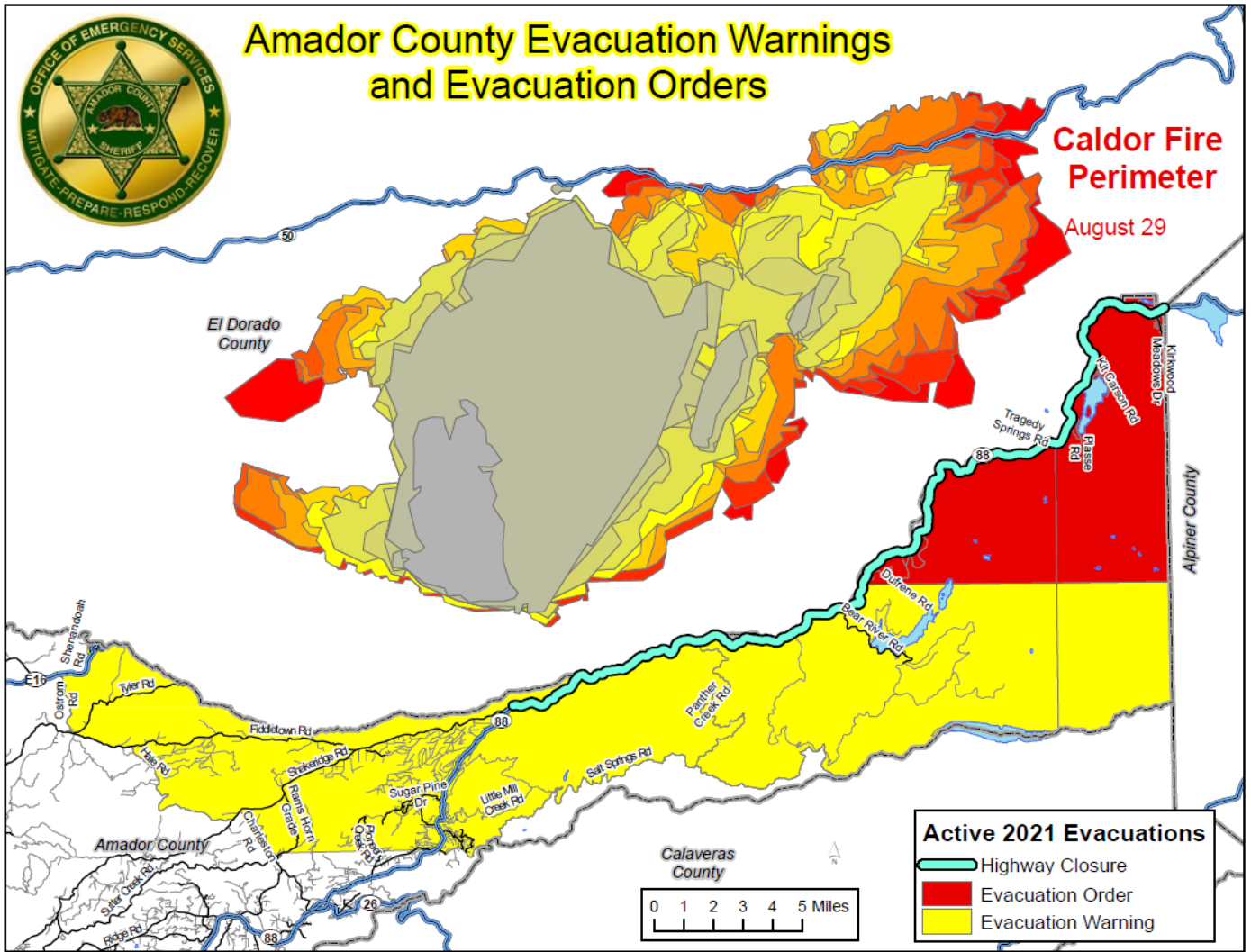
Safety Message:

The public is reminded to stay vigilant on current fire conditions. Please continue to adhere to road closures and any evacuation orders and warnings. A reminder to drive slowly and yield to emergency personnel in the area. There will be smoke in the respective areas as firefighters continue firefighting operations. If at any time you feel unsafe, please call 911.



Amador County Evacuation Warnings and Evacuation Orders

Caldor Fire Perimeter
August 29



www.readyforwildfire.org

###